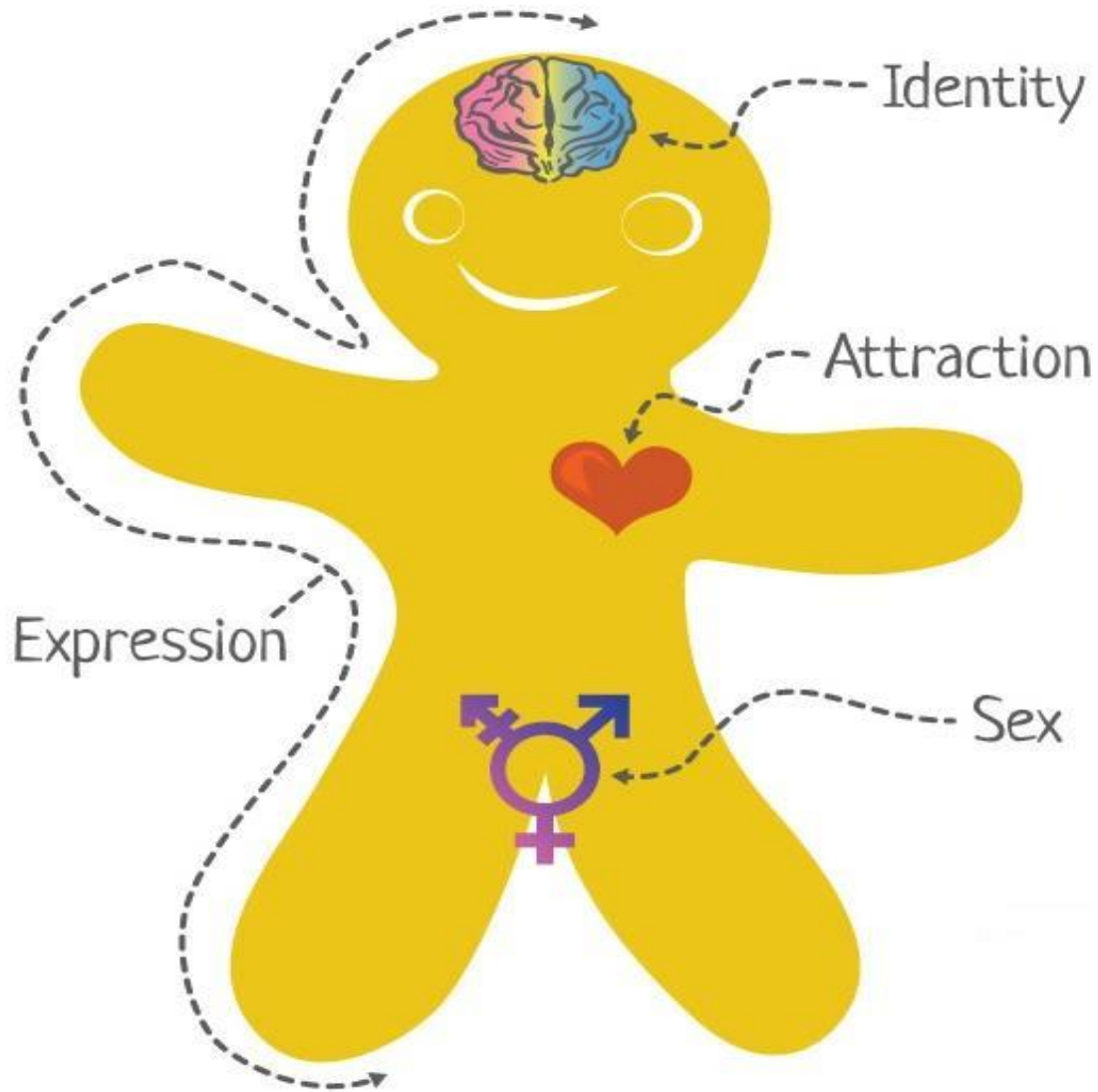
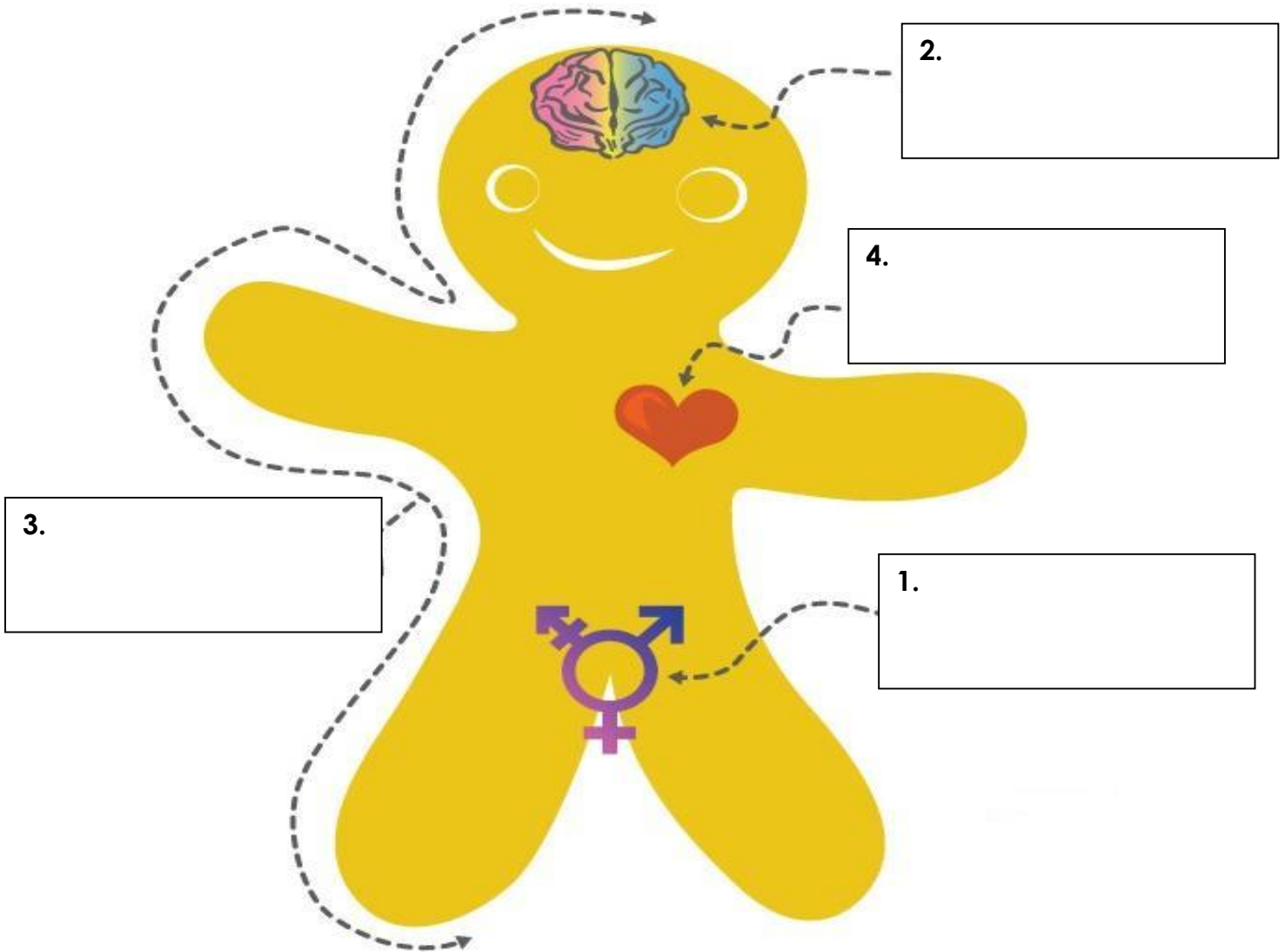


GENDERBREAD PERSON



How can we make sure all students feel SAFE and WELCOME at our school?

GENDERBREAD PERSON



How can we make sure all students feel SAFE and WELCOME at our school?

WHAT I KNOW ABOUT GENDER AND SEXUAL ORIENTATION

Name _____ Period _____ Date _____

Directions: Mark T for True or F for False next to the following statements.

- 1) _____ You can always tell if someone is gay by the way they dress or talk.
- 2) _____ People who identify as LGBTQ+ experience more bullying and violence than non-LGBTQ+ people.
- 3) _____ There are many churches that accept gay, lesbian and transgender people.
- 4) _____ A gay male is a boy who wants to be a girl. A lesbian is a girl who wants to be a boy.
- 5) _____ Children of gay, lesbian and bisexual adults usually grow up to be gay also.¹
- 6) _____ People choose to be gay, lesbian, or bisexual.²
- 7) _____ There are many groups and organizations that support teens who are LGBTQ+.

¹ American Psychological Association. (2008). *Answers to your questions: For a better understanding of sexual orientation and homosexuality*. Washington, DC: 2008. (Available at: www.apa.org/topics/orientation.pdf)

² American Psychological Association. *Answers to your questions about transgender individuals and gender identity*. Washington, DC: 2006.

Appendix G.5: Gender Sorting Activity

SINGING



DANCING



LISTENING TO MUSIC



PLAYING MUSICAL INSTRUMENTS



FOOTBALL



SOCCER



GOLFING



SWIMMING



WEARING MAKE-UP



PAINTING NAILS



LIKING PINK



LIKING BLUE



PAINTING



DRAWING



BUILDING THINGS



CARS



VIDEO GAMES



LIFTING WEIGHTS



BAKING



COOKING



GOING TO THE MALL



SKATEBOARDING



PLAYING WITH ANIMALS



CAMPING



BEING A DOCTOR



BEING A NURSE



BEING A FIREFIGHTER



BEING A POLICE OFFICER



BEING A FASHION DESIGNER



BEING A TEACHER



Session 5 Assessment: Sexual Identity

Category 1: True/False and Open Ended

Sexual Identity Questions:

1. In the Genderbread Prezi, what does biological sex refer to?
Answer: A person's body parts
2. Gender refers to...
Answer: How a person feels inside
3. True/ False: Expression refers to who you like.
Answer: False- this refers to attraction. Expression is how a person communicates their gender to the outside world.

What I know About Gender and Sexual Orientation Questions:

1. True/ False: How a person dresses or talks can tell you their sexual orientation (who they are attracted to).
Answer: False
2. True/ False: People choose to be gay, lesbian or bisexual.
Answer: False

Category 2: Tally

Educator or Data Recorder: Begin by reading a question and the three possible answer choices so students can hear all options. Read the question again and as you go through the possible answer choices, have students raise their hand when they hear the option they think is correct and put tally marks in the appropriate boxes.

<p>Topic: Sexual Identity</p> <p>Question 1: Biological sex refers to:</p> <p>Answer: Body parts</p>	<p>Who You Like</p> <p><u>Pre-Assessment:</u></p> <p><u>Post-Assessment:</u></p>	<p>Body Parts</p> <p><u>Pre-Assessment:</u></p> <p><u>Post-Assessment:</u></p>	<p>Not Sure</p> <p><u>Pre-Assessment:</u></p> <p><u>Post-Assessment:</u></p>
<p>Topic: Sexual Identity</p> <p>Question 2: True/False: Gender refers to how a person feels on the inside.</p> <p>Answer: True</p>	<p>True</p> <p><u>Pre-Assessment:</u></p> <p><u>Post-Assessment:</u></p>	<p>False</p> <p><u>Pre-Assessment:</u></p> <p><u>Post-Assessment:</u></p>	<p>Not Sure</p> <p><u>Pre-Assessment:</u></p> <p><u>Post-Assessment:</u></p>
<p>Topic: What I know About Gender and Sexual Orientation</p> <p>Question 1: True/False: How a person dresses or talks can tell you their sexual orientation (who they are attracted to).</p> <p>Answer: False</p>	<p>True</p> <p><u>Pre-Assessment:</u></p> <p><u>Post-Assessment:</u></p>	<p>False</p> <p><u>Pre-Assessment:</u></p> <p><u>Post-Assessment:</u></p>	<p>Not Sure</p> <p><u>Pre-Assessment:</u></p> <p><u>Post-Assessment:</u></p>
<p>Topic: What I know About Gender and Sexual Orientation</p> <p>Question 2: True/False: People choose to be gay, lesbian or bisexual.</p> <p>Answer: False</p>	<p>True</p> <p><u>Pre-Assessment:</u></p> <p><u>Post-Assessment:</u></p>	<p>False</p> <p><u>Pre-Assessment:</u></p> <p><u>Post-Assessment:</u></p>	<p>Not Sure</p> <p><u>Pre-Assessment:</u></p> <p><u>Post-Assessment:</u></p>

Category 3: Icon Selection






- **Option 1:** Place the options on the board and label them 1-3. Have the students hold up 1, 2, or 3 fingers to represent the answer they chose.
- **Option 2:** Print out answer cards before assessment. Place the cards in front of the students and have them point to the correct answer.

Sexual Identity Question:

1. True/False: A person's sex refers to what body parts they are born with.
Answer: True
2. What is gender?
Answer: How someone feels inside

What I Know About Gender and Sexual Orientation Question:

1. True/False: How a person dresses or talks can tell you their sexual orientation (who they are attracted to).
Answer: False
2. True/False: People choose to be gay, lesbian or bisexual.
Answer: False

<p>Row 1</p>	<p>True</p> 	<p>False</p> 	<p>Not sure</p> 
<p>Row 2</p>	<p>Who you are attracted to</p> 	<p>How you feel on the inside</p> 	<p>Not sure</p> 